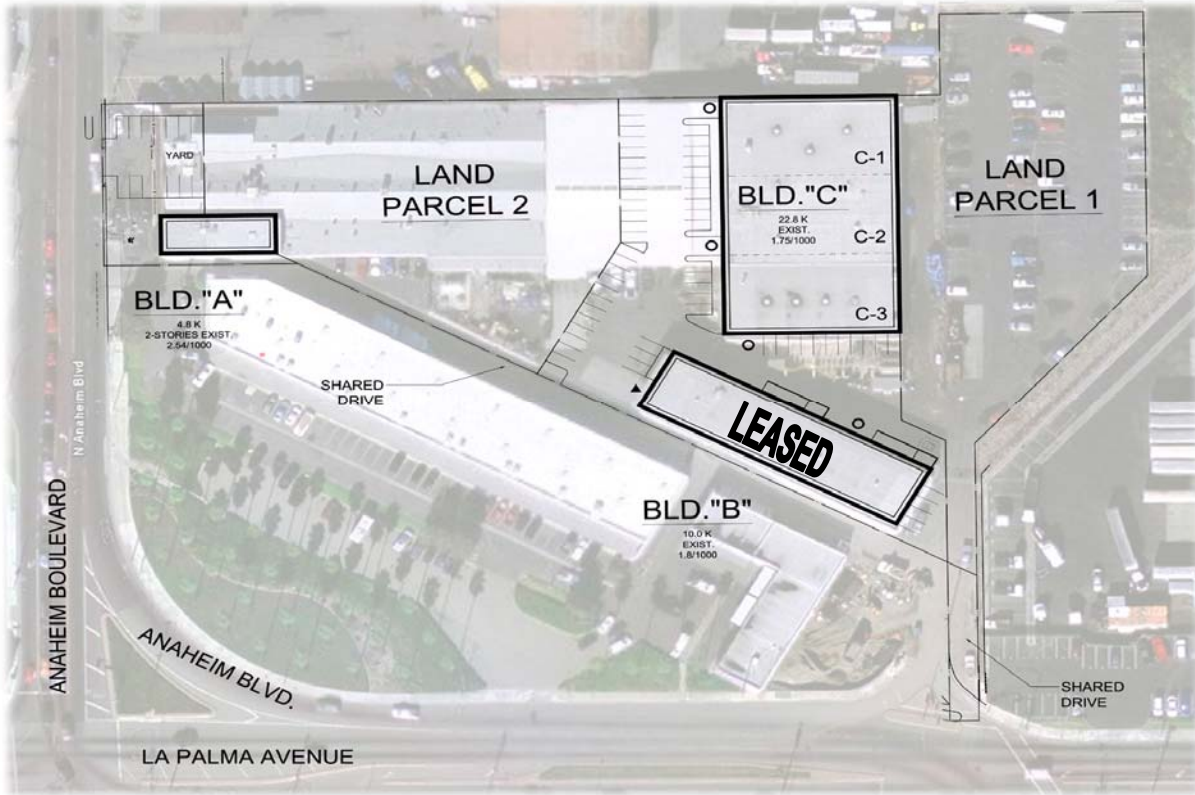


ANAHEIM LAPALMA BUSINESS CENTER

Industrial / Warehouse Buildings

FOR SALE

37,600 SQUARE FEET



1110 N. Anaheim Boulevard
Anaheim • California

FEATURES:

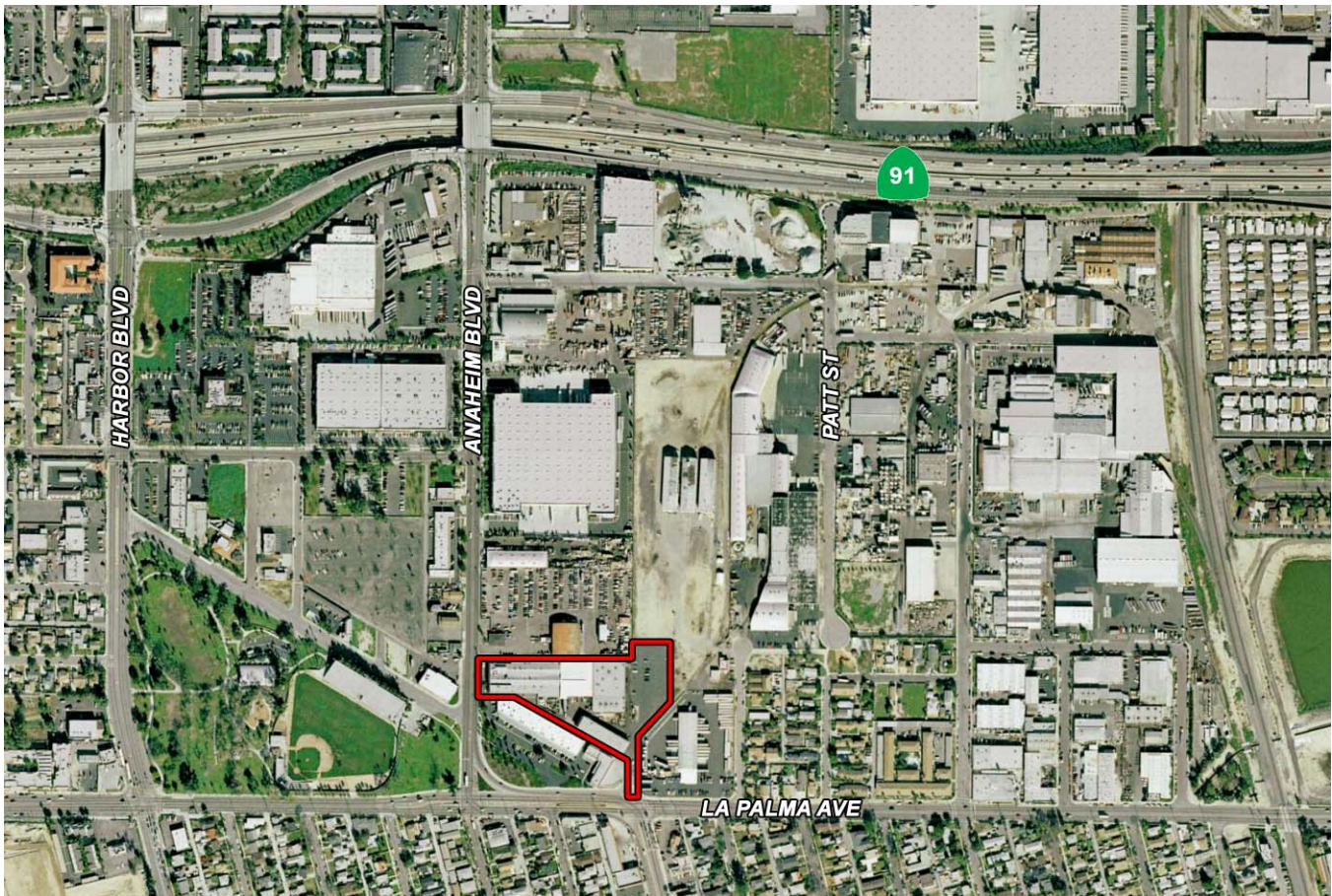
- 3 Buildings; 4,800 SF to 22,800 SF
- In the Heart of the North Orange County Marketplace with Excellent Access to Los Angeles County
- 4.1 Acres of Land
- Up to 6:1 Parking
- Major Street Frontage and Signage
- High Image Building Finishes
- Fully Fire Sprinklered
- 2,600 Amps Power
- Ground Level Loading
- Large Secured Yard
- Buildings Available Early 2006
- Adjoining 350,000 Sq. Ft. Development
- Immediate Access to the Riverside (91), Orange (57) and Santa Ana (5) Freeways



Developed by:



ANAHEIM LAPALMA BUSINESS CENTER



BUILDINGS

Building Address	Total Building Sq. Ft.	1 st Floor Office Sq. Ft.	1 st Floor Warehouse Sq. Ft.	2 nd Floor Office Sq. Ft.	Parking Stalls ⁽¹⁾	Amps	Loading
1110 A	4,800	0	2,400	2,400	13	400	1 GL
1110 B	10,000	800	9,200	0	18	600	1 DH
1110 C	22,800	T.B.D.	22,800	0	40	1,600	3 GL

⁽¹⁾ All parking in common

LAND PARCELS

Address	Parcel Size	Features
N/A / Parcel 1	50,558 Sq Ft.	Direct access to La Palma Avenue
N/A / Parcel 2	44,652 Sq. Ft.	Direct access to Anaheim Boulevard

For Further Information, Contact:

BRIAN P. CORRIGAN, SIOR

bcorrigan@voitco.com

714.978.7880

Fax: 714.978.8325



Voit
Commercial Brokerage

3500 W. Orangewood Avenue
Orange, CA 92868

Developed by:

